



Product Portfolio 2026

Your Light. Our Passion.

Two expert brands. One cohesive vision. With our dynamic lighting and control systems, your lighting vision will come to life with unmatched precision, beauty, and functionality.



COLORFUL ILLUMINATION

SCALABLE AND RELIABLE

Scalable lighting and control systems from small meeting rooms to large-scale façades, bridges and city-wide installations.



DYNAMIC MEDIA

We support you at every stage of the project with expert consulting, training, and technical guidance. When your vision requires something unique, we'll work with you to create custom solutions specifically for your application.

EXPERIENCE

With over 30 years of innovation, Traxon e:cue has pioneered advanced luminaires and control solutions, building deep expertise and earning the loyalty of customers worldwide.



IMMERSIVE EXPERIENCES

GLOBAL NETWORK OF PARTNERS

With the strength of our global distribution and partner network, we confidently execute lighting and control projects of any scale or complexity.



M+
Hong Kong, China

Lighting Designer: Arup UK, HK
I-Art (Swiss)

OUR MISSION

Delivering sustainable beauty through light.

OUR VISION

Illuminating a world of new possibilities.

OUR VALUE

Empowering lighting design with a complete lighting ecosystem; from design concept to global deployment.



Traxon Product Tiers

Thoughtfully designed to cater to your unique requirements, featuring a diverse range of performance options and budgets to suit every project.

TRAXON Pro^{*}

Design, performance and innovation that is unsurpassed in architectural lighting.

TRAXON Plus⁺

The benchmark for dynamic architectural lighting solutions.

TRAXON Go[→]

Essential features and performance for architectural projects.



Traxon e:cue Technologies

Engineered innovations that push performance further than ever before.



DMX512 with RDM Standardized, Open-Source, control protocol developed to address incompatible proprietary protocols used by different manufacturers.

Remote Device Management:

A secondary protocol that integrates into the DMX signal and is used for configuration and maintenance of your system.



e:pix For the communication between Traxon fixtures. Comparable to DMX512 but up to 4 times more control channels including auto-addressing and up to 60fps.



e:net e:cue's network standard enables secure communication between software and e:cue controllers, providing additional encryption, fast bi-directional status exchange, and synchronized frame output.



e:voPix e:cue's newest video-based protocol. Up to 4096 channels and 60fps, with bi-directional feedback for system maintenance.



Coastal Indicates that our products have been subjected to the ASTM B117 Salt Spray Test for periods of over 1000hours.



Dynamic Boost Dynamic Boost takes RGBW performance to the next level by intelligently reallocating power where it's needed most. Instead of splitting output evenly across all four channels, Dynamic Boost automatically boosts the active colors—delivering brighter, more vibrant light when certain channels are unused, maximizing output. More brightness, more efficiency, and a more intuitive lighting experience—built to make every color shine at its full potential.

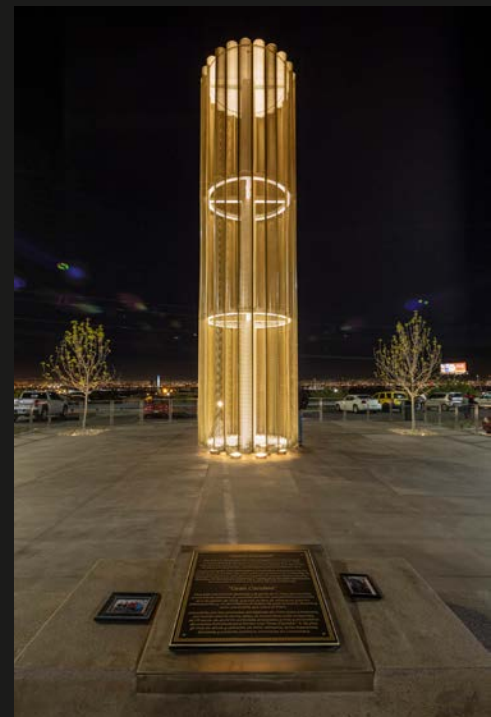
SYMPHONY

SYMPHONY is our new cutting-edge technology that integrates 7 individual colors beneath a single optic, delivering precise color blending with virtually no mixing distance.

Project Showcases



Photo credit: SCKM



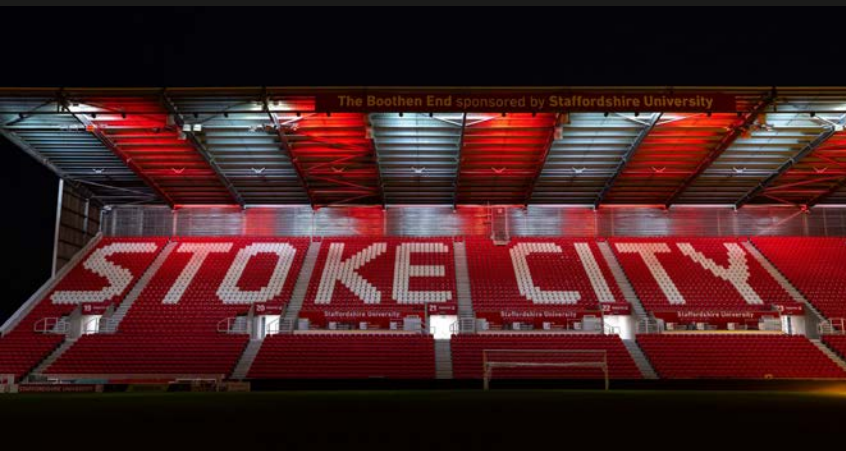
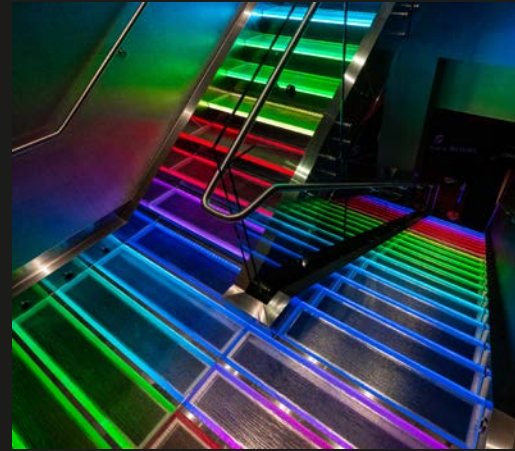


Photo provided by: LK Technology

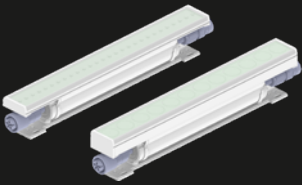


Linear Indoor

All Cove Light Plus models feature:



- Equipped with Dynamic Boost Technology
- DMX with RDM and 0-10v control
- ±90° Tilt adjustment
- Auto-Addressing or RDM Addressing
- Clear or Frosted Lens
- Symmetric / Asymmetric Louvers, Honeycomb Louver and blocking plate for glare control
- Mounting Track for simplified installation



Product

Cove Light Plus RGBW
1ft & 4ft lengths

12W/foot Output
RGBW Quad: 636 lm/ft @ 120°

Optic

Discrete:

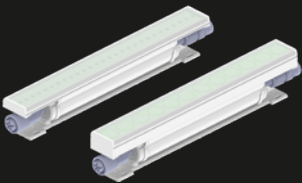
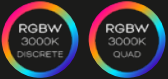
10° / 20° / 30° /
50° / 60° / 80° /
35°x10° / 60°x10° /
60°x20° / 60°x30°

Quad:

12° / 15° / 20° / 30° /
50° / 60° / 90° /
30°x15° / 45°x20° /
60°x15° / 60°x20° /
60°x35° / 120°

Key Features

- 3000K White CCT standard. Others by request
- DMX with RDM
- 3W / 5W / 8W / 12W per foot models

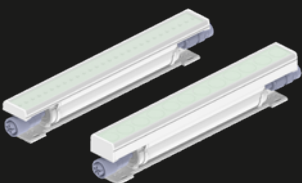


Cove Light Plus Dynamic White

12W/foot Output
160 lm/ft @ 120°

10° / 20° / 30° /
50° / 60° / 80° /
35°x10° / 60°x10° /
60°x20° / 60°x30° /
120°

- 2200K to 5700K CCT
- DMX with RDM
- 3W / 5W / 8W / 12W per foot models

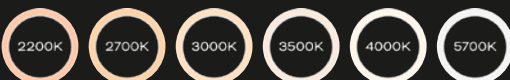


Cove Light Plus White

12W/foot Output
4000K: 1550 lm/ft @ 120° 0-10v

10° / 20° / 30° /
50° / 60° / 80° /
35°x10° / 60°x10° /
60°x20° / 60°x30° /
120°

- Variety of white CCT's available in 80CRI or 90CRI
- DMX with RDM or 0-10v
- 3W / 5W / 8W / 12W per foot models DMX
- 3W / 5W / 8W / 10W per foot models 0-10v





Ogden Eccles Conference Center
Ogden, Utah

Lighting Designer: BNA Consulting



12th Street City Center
Oakland, CA

Lighting Designer: Electrolight

Linear Plus - The Next Generation of Linear Excellence

The Traxon Linear Plus is an AC-powered linear luminaire designed for powerful façade grazing and washing, offering versatile RGBW, Dynamic White, and White color temperature options and DMX with RDM or 0-10V control for seamless integration into any architectural environment. Engineered for reliability with features like Dynamic Boost Technology, active thermal protection, and auto-addressing, it delivers exceptional performance across multiple lengths and power levels—including high-power versions up to 30 W/ft—while maintaining easy plug'n'play installation.

TRAXON Linear Plus⁺

Linear Plus⁺ Discrete LED
RGBW/White/Dynamic White

Linear Plus⁺ Quad LED
RGBW

Linear Plus⁺ HO Quad LED
RGBW/White/Dynamic White

IK08 rated against impacts
& 3G Vibration tested

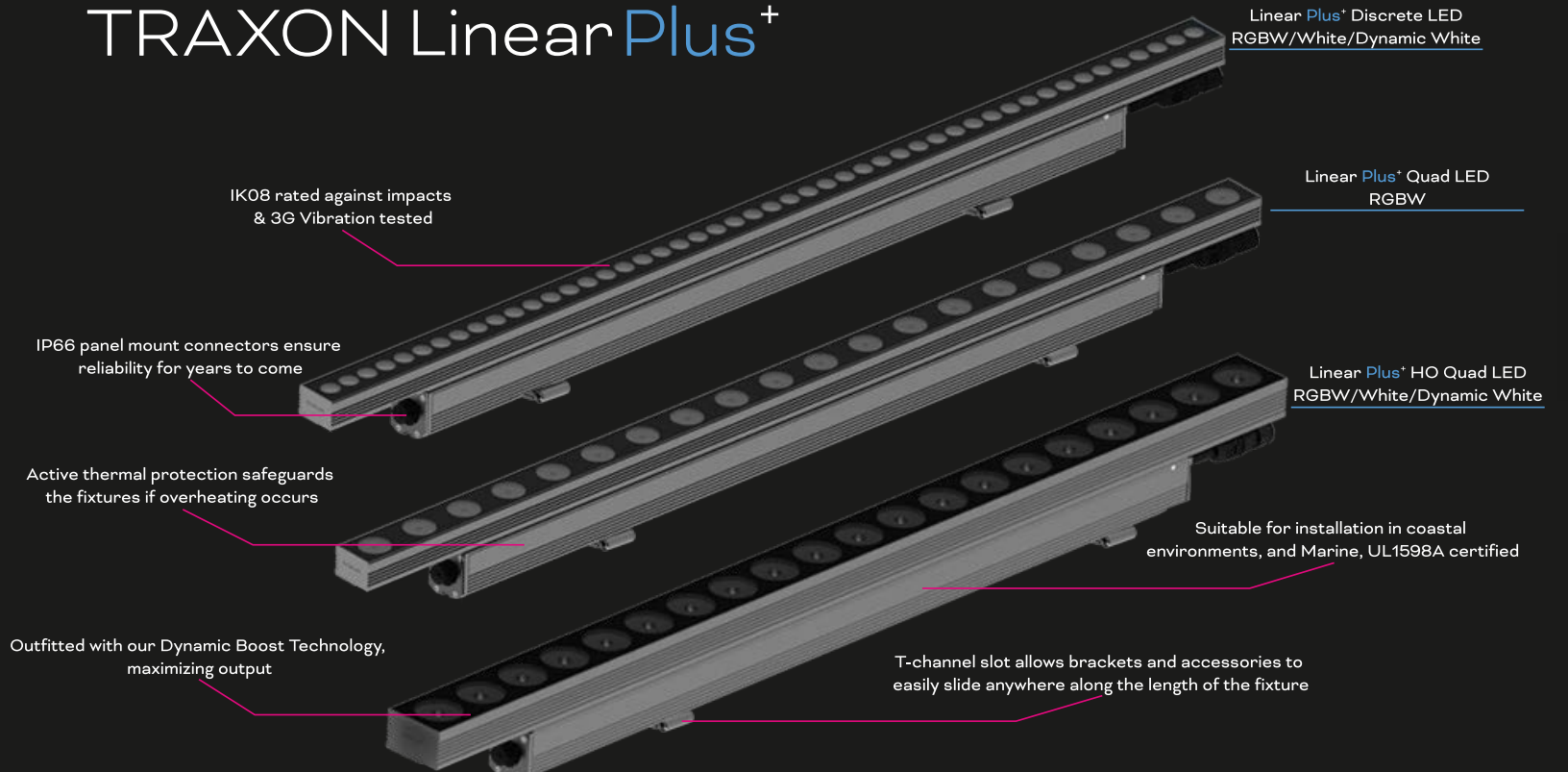
IP66 panel mount connectors ensure
reliability for years to come

Active thermal protection safeguards
the fixtures if overheating occurs

Suitable for installation in coastal
environments, and Marine, UL1598A certified

Outfitted with our Dynamic Boost Technology,
maximizing output

T-channel slot allows brackets and accessories to
easily slide anywhere along the length of the fixture



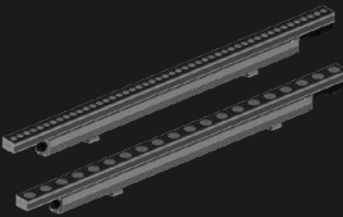


Linear Outdoor

All Linear Plus models feature:



- Equipped with Dynamic Boost Technology
- DMX with RDM and 0-10v control
- ±90° Tilt adjustment
- Auto-Addressing or RDM addressing
- Symmetric / Asymmetric louvers and louver blocking plate for glare control
- Mounting accessories including static and adjustable wall mount arms and landscape stake
- Cable concealing accessory provides a professional finish by hiding cables, ensuring an uninterrupted aesthetic
- Available in 4 standard finishes: RAL 7005 / RAL7015 / RAL9005 / RAL9003 / custom RAL



Product

Linear Plus
1ft - 4ft lengths

15W/foot Output
Quad: 1200 lm/ft @ 15°
DW: 1335 lm/ft @ 10°
4000K: 1356 lm/ft @ 10°

Optic

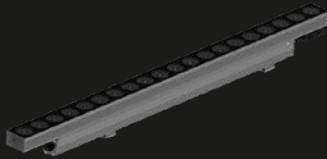
Discrete
10° / 20° / 30° / 40° / 60° / 105° / 60°x10° / 60°x30°

Quad
15° / 20° / 30° / 45° / 60° / 55°x20° / 60°x15° / 60°x30°

White / DW
10° / 20° / 30° / 40° / 60° / 105° / 60°x10° / 60°x30°

Key Features

- Four performance packages - 4W / 8W / 12W / 15W per foot
- Quad and Discrete RGBW, along with white CCT and Dynamic White

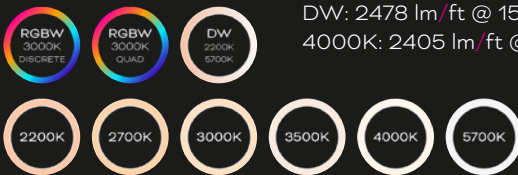


Linear Plus HO
1ft - 4ft lengths

30W/foot Output
RGBW: 1680 lm/ft @ 15°
DW: 2478 lm/ft @ 15°
4000K: 2405 lm/ft @ 15°

RGBW / White / DW
15° / 20° / 30° / 45° / 60° / 60°x15° / 60°x30°

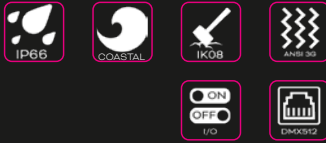
- Two performance packages - 20W / 30W per foot
- Quad RGBW and single-chamber LED white CCT and Dynamic White



Linear Outdoor

All Linear Go models feature:

- DMX and on / off
- 0-10v coming soon
- Manual Addressing via TX Smart Addresser
- RAL 7005 finish



Product

Optic

Key Features

Linear Go Mini
1ft & 4ft lengths

3.4W/foot Output

RGBW Quad: 170 lm/ft @ 35°
4000K: 289 lm/ft @ 30° DMX

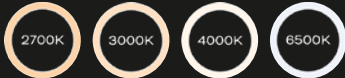
4.5W/foot Output

RGBW Quad: 225 lm/ft @ 35°
4000K: 383 lm/ft @ 30° DMX

RGBW:
35° / 45° / 45°x35°

White:
20° / 30° / 40° /
55°x20°

- Two performance packages - 3.4W / 4.5W per foot. 3.4W is ASHRAE 90.1-2022 Zone 3 compliant
- -30° to +90° tilt adjustment
- Quad RGBW LEDs



24 Volts
DC
Class 2

Linear Go Midi
1ft & 4ft lengths

8W/foot Output

RGBW Quad: 400 lm/ft @ 35°
4000K: 720 lm/ft @ 30° DMX

RGBW:
25° / 35° / 45°x20°

White:
12° / 30° / 45° / 55°
/ 30°x15° / 55°x15°

- 8W per foot
- ±90° tilt adjustment
- Quad RGBW LEDs
- Optional built-in glare shield



24 Volts
DC
Class 2

Linear Go Maxi AC
1.5ft & 4ft lengths

12W/foot Output

RGBW Discrete: 598 lm/ft @ 12°
4000K: 888 lm/ft @ 12° DMX

RGBW & White:
12° / 30° / 45° / 55° /
30°x15° / 55°x15°

- 12W per foot
- ±90° tilt adjustment
- Discrete LEDs
- DC model is available by request
- Optional built-in glare shield



120-277
Volts
AC



The Bowl at Ballantyne
Charlotte, NC

Photo by Jason Varner. V3 Lighting

Washer Outdoor

All Washer Pro models feature:

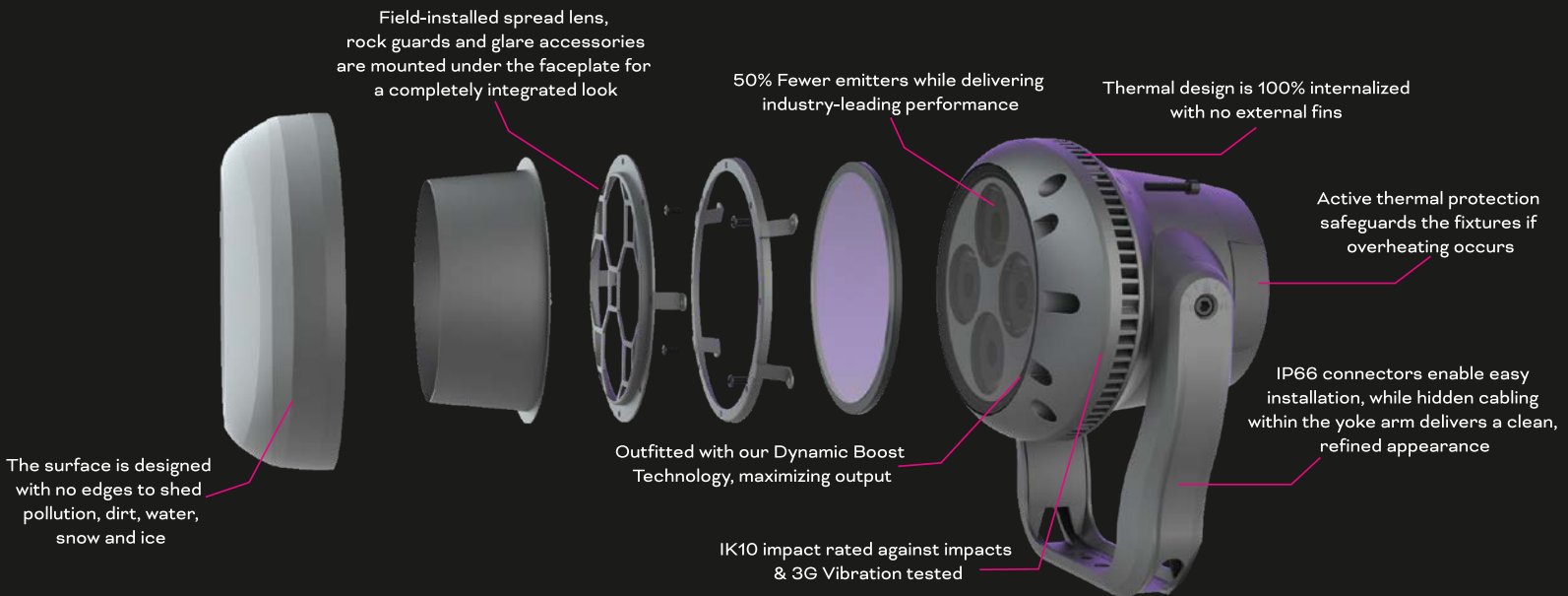


- Equipped with Dynamic Boost Technology
- DMX with RDM and 0-10v control
- Auto-Addressing or RDM Addressing
- Full / Angled Glare Shields, Rock Guards (IK10), Spread Lens Kits
- Mounting accessories including rotating plates and Tree Ring Mounts
- Landscape stake for Nano, Micro and Mini.
- Available in 4 standard finishes: RAL 7005 / RAL7015 / RAL9005 / RAL9003 / custom RAL

Washer Pro - Minimum Size. Maximum Light.

The Traxon Washer Pro is a state-of-the-art family of architectural Washers designed with sustainability at its core. With the smallest footprint, using less raw materials, fewer LEDs and delivering more light from less power! Our unique sculpted housing is designed to shed dirt, pollution and water and includes the option to add fully integrated accessories without compromising the design aesthetic.

TRAXON Washer Pro*



SYMPHONY

SYMPHONY brings your vision to life with the industry's most versatile color range, rich color depth, and high quality tunable white—all in one powerful platform.

Our SYMPHONY platform integrates 7 individual colors beneath a single optic, delivering precise color blending with virtually no mixing distance. SYMPHONY unlocks a spectrum of unique colors that RGBW fixtures simply cannot achieve.

Create unique brand colors, richer pastels and deeper color saturation, while producing more natural and true colors to bring unrivaled depth to the installation.

SYMPHONY is currently available in the Washer Pro family, with more options coming in 2026.

The SYMPHONY platform is built around four key principles:

SYMPHONY
EXTENDED
COLOR

Unlock a broader spectrum of creative possibilities with an expanded color range. Go beyond RGBW to craft vibrant, saturated tones, soft pastels, and one-of-a-kind scenes using custom color recipes.

SYMPHONY
CUSTOMIZED
COLOR

Create your own customized array of color options with 7 individual colors, or create brand-specific colors with saturation and punch beyond what's possible with traditional RGB/RGBW color mixing.

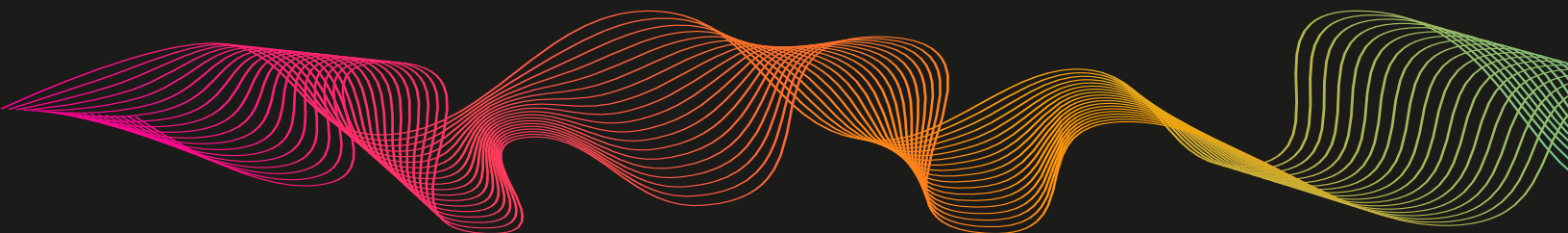
SYMPHONY
HIGH FIDELITY
WHITE

SYMPHONY has the ability to mix a variety of white light looks without requiring a dedicated white LED. With this, SYMPHONY can achieve high fidelity, with accurate, faithful rendering of color to see things as they truly are.

CRI: 93+ from 2,200K to 2,700K
CRI: 95+ from 2,700K to 10,000K

SYMPHONY
HIGH GAMUT
WHITE

Create more visual impact and dimension with vibrant, high gamut whites.
Rg ~120 from 2,000K to 6,500K





Red



Green



Blue



White
6500K



Cyan



Lime



Amber

Integrates vivid color capability with a dedicated white light source, enabling both expressive lighting effects and standard white light.

Ideal for: Commercial exteriors, monuments and art installations, and architectural landmarks.



Red



Green



Blue



Mid-
Blue



Cyan



Lime



Amber

Emphasizes full spectrum capability while enabling exceptional depth in blue tones and expanded blending capability.

Ideal for: Immersive environments, requiring vibrant, high-intensity color and dynamic pastels or warmer accents.



Deep
Red



Green



Blue



Violet



Cyan



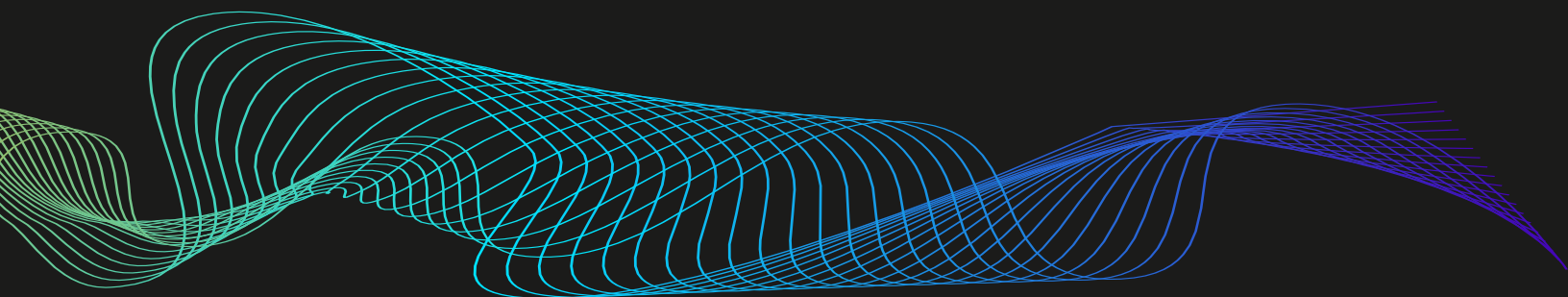
Lime



Amber

Excels at producing deep, saturated, and nuanced colors across the spectrum.

Ideal for: Themed environments, entertainment venues, monuments and art installations. The extended gamut is perfect where visual storytelling is required.

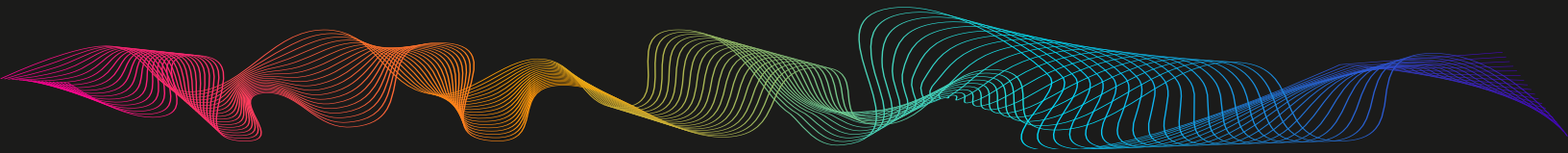


Washer Pro SYMPHONY



The Mill at Mississippi State University
Starkville, MS

Lighting Designer: REVELume



Product

Optic

Key Features

Washer Pro SYMPHONY Nano

10W Output

RGBWCLA: 427 lm @ 15°
RGBMCLA: 310 lm @ 15°
DGBVCLA: 244 lm @ 15°

SYMPHONY

15° / 20° / 30° / 50° / 60° /
85° / 40°x20°^{SL} / 60°x35°

CBOP: 3142 cd
CBOP: 2283 cd
CBOP: 1793 cd

- 10W per fixture
- The power can be set to 10W-12W to match project specifications and environmental targets
- -5° to +95° tilt adjustment

Washer Pro SYMPHONY Micro

30W Output

RGBWCLA: 1204 lm @ 15°
RGBMCLA: 875 lm @ 15°
DGBVCLA: 687 lm @ 15°

SYMPHONY

15° / 20° / 30° / 50° / 60° /
85° / 40°x20°^{SL} / 60°x35°

CBOP: 8861 cd
CBOP: 6440 cd
CBOP: 5057 cd

- 30W per fixture
- The power can be set to 15W-30W to match project specifications and environmental targets
- -5° to +95° tilt adjustment



24 Volts
DC
Class 2

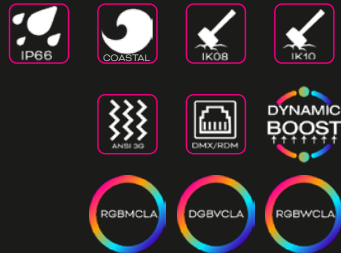


24 Volts
DC
Class 2



Washer Outdoor

All Washer Pro **SYMPHONY** models feature:



- Equipped with Dynamic Boost Technology
- DMX with RDM
- Auto-Addressing or RDM Addressing
- Full / Angled Glare Shields, Rock Guards (IK10), Spread Lens Kits
- Mounting accessories including rotating plates and Tree Ring Mounts
- Landscape stake for Nano, Micro and Mini.
- Available in 4 standard finishes: RAL 7005 / RAL7015 / RAL9005 / RAL9003 / custom RAL

Product	Optic	Key Features
---------	-------	--------------

Washer Pro **SYMPHONY** Mini

SYMPHONY
15° / 20° / 30° / 50° / 60° / 85° / 40°x20°^{SL} / 60°x35°

- 60W per fixture
- The power can be set to 30W-60W to match project specifications and environmental targets
- -5° to + 95° tilt adjustment

60W Output

RGBWCLA: 2066 lm @ 15°	CBCP: 15203 cd
RGBMCLA: 1501 lm @ 15°	CBCP: 11049 cd
DGBVCLA: 1179 lm @ 15°	CBCP: 8675 cd



120-277
Volts
AC

Washer Pro **SYMPHONY** Midi

SYMPHONY
15° / 20° / 30° / 50° / 60° / 85° / 40°x20°^{SL} / 60°x35°

- 100W per fixture
- The power can be set to 60W-100W to match project specifications and environmental targets
- -5° to + 95° tilt adjustment

100W Output

RGBWCLA: 3732 lm @ 15°	CBCP: 27464 cd
RGBMCLA: 2713lm @ 15°	CBCP: 19961 cd
DGBVCLA: 2130 lm @ 15°	CBCP: 15672 cd



120-277
Volts
AC

Washer Pro **SYMPHONY** Maxi

SYMPHONY
15° / 20° / 30° / 50° / 60° / 85° / 40°x20°^{SL} / 60°x35°

- 150W per fixture
- The power can be set to 100W-150W to match project specifications and environmental targets
- -5° to + 95° tilt adjustment

150W Output

RGBWCLA: 5821 lm @ 15°	CBCP: 42837 cd
RGBMCLA: 4231 lm @ 15°	CBCP: 31133 cd
DGBVCLA: 3322 lm @ 15°	CBCP: 24444 cd



120-277
Volts
AC

^{SL} Spread Lens Kit is used
Output for all units based on 7-Channel Dynamic Boost personality



Ecolab
St. Paul, MN

Ecolab
©Hunt Electric
Lighting Designer:
DAVIS & Hunt Electric



Product

Optic

Key Features

Washer Go Maxi

150W Output

RGBW Discrete: 8574 lm @ 12°
RGBW CBCP: 120919 cd

4000K: 12750 lm @ 12° DMX
4000K CBCP: 179813 cd

RGBW & White

12° / 25° / 30° /
45° / 60° / 55°x20°

- 150W
- Optional integrated glare shield
- ±90° tilt adjustment
- Discrete RGBW LEDs



ProPoint Sconce

S Output

4000K: 281 lm @ 10°x5°

M Output

4000K: 520 lm @ 10°x5°

L Output

4000K: 880 lm @ 10°x5°

Static Color & White

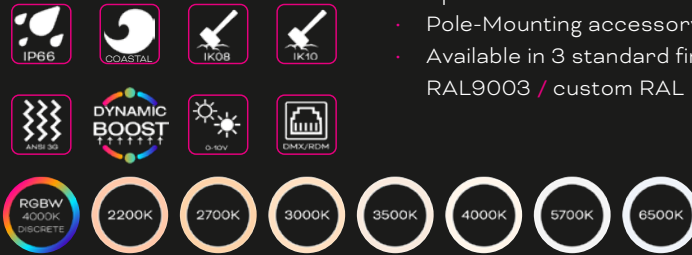
10°x5°

- Available in 3 sizes:
S: 9W
M: 15W
L: 24W
- 90° tilt adjustment
- Available in 3 standard finishes: RAL7015 / RAL9005 / RAL9003

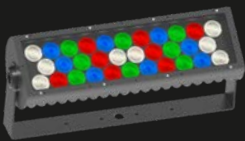


Washer High Power

All Vista Plus models feature:



- Equipped with Dynamic Boost Technology
- DMX with RDM and 0-10v control
- Auto-Addressing or RDM Addressing
- Full / Angled Glare Shields, Rock Guards (IK10), Spread Lens Kits
- Pole-Mounting accessory
- Available in 3 standard finishes: RAL7015 / RAL9005 / RAL9003 / custom RAL



Product

Optic

Key Features

Vista Plus Midi / Midi HO
1x100W / 1x200W

RGBW & White
3° / 4° / 5°^{SL} / 8°^{SL} / 10°^{SL} /
15°^{SL} / 20°^{SL} / 30°^{SL} / 40°^{SL} /
55°^{SL} / 80°^{SL} / 50° x 5°^{SL} /
50° x 10°^{SL}

- Midi: 100W per head
- Midi HO: 200W per head
- Each head is individually adjustable for precise aiming

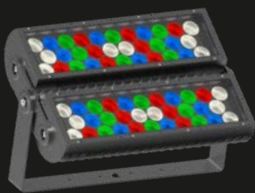
Midi 1x100W Output
RGBW: 5800 lm @ 3°
RGBW CBCP: 771,400 cd

Midi 1x200W Output
RGBW: 11880 lm @ 4°
RGBW CBCP: 676,730 cd

4000K: 10500 lm @ 3°
4000K CBCP: 1,386,000 cd

4000K: 21000 lm @ 4°
4000K CBCP: 1,135,260 cd

120-277
Volts
AC



Vista Plus Midi / Midi HO
2x100W / 2x200W

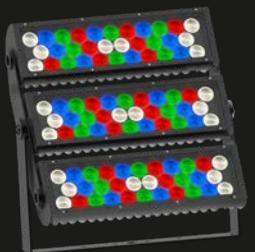
Midi 2x100W Output
RGBW: 11600 lm @ 3°
RGBW CBCP: 1,542,800 cd

Midi 2x200W Output
RGBW: 23600 lm @ 4°
RGBW CBCP: 1,353,460 cd

4000K: 21000 lm @ 3°
4000K CBCP: 2,772,000 cd

4000K: 42000 lm @ 4°
4000K CBCP: 2,270,520 cd

120-277
Volts
AC



Vista Plus Midi / Midi HO
3x100W / 3x200W

Midi 3x100W Output
RGBW: 17400 lm @ 3°
RGBW CBCP: 2,314,200 cd

Midi 3x200W Output
RGBW: 35400 lm @ 4°
RGBW CBCP: 2,030,190 cd

4000K: 31500 lm @ 3°
4000K CBCP: 4,158,000 cd

4000K: 63000 lm @ 4°
4000K CBCP: 3,405,780 cd

120-277
Volts
AC



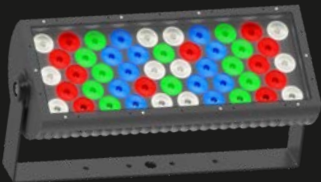
300 Capitol Mall
Sacramento, CA

Engineer, Install, Programmer:
Rampart Electrical

Product

Optic

Key Features



Vista Plus Maxi / Maxi HO
1x200W / 1x380W

RGBW & White
3° / 4° / 5°^{SL} / 8°^{SL} / 10°^{SL} /
15°^{SL} / 20°^{SL} / 30°^{SL} / 40°^{SL} /
55°^{SL} / 80°^{SL} / 50°x 5°^{SL} /
50°x 10°^{SL}

- Maxi: 200W per head
- Maxi HO: 400W per head
- Each head is individually adjustable for precise aiming

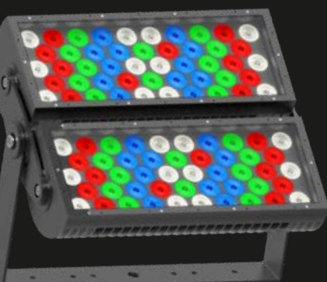
Maxi 1x200W Output
RGBW: 11200 lm @ 3°
RGBW CBCP: 1,769,600 cd

Maxi 1x380W Output
RGBW: 22800 lm @ 4°
RGBW CBCP: 1,390,800 cd

4000K: 22000 lm @ 3°
4000K CBCP: 2,904,000 cd

4000K: 41800 lm @ 4°
4000K CBCP: 3,977,086 cd

120-277
Volts
AC



Vista Plus Maxi / Maxi HO
2x200W / 2x380W

Maxi 2x200W Output
RGBW: 22400 lm @ 3°
RGBW CBCP: 3,539,200 cd

Maxi 2x380W Output
RGBW: 45600 lm @ 4°
RGBW CBCP: 2,781,600 cd

4000K: 44000 lm @ 4°
4000K CBCP: 5,808,000 cd

4000K: 83600 lm @ 4°
4000K CBCP: 4,519,416 cd

120-277
Volts
AC

^{SL} Spread Lens Kit is used

Media Dots



Product

Allegro Dot S | M | L

S - 1W Output RGBW
48 lm @ Clear Lens

M - 2W Output RGBW
103 lm @ Clear Lens

L - 3W Output RGBW
147 lm @ Clear Lens

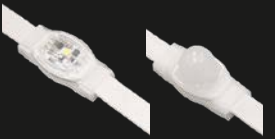
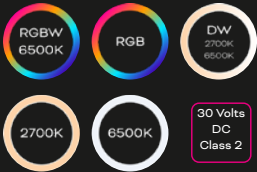
Optic

**RGBW, RGB,
DW & White**
S:
Clear Lens - 100°
Dome Lens - 135°

M / L
Clear Lens - 110°
Dome Lens - 150°

Key Features

- 1W / 2W / 3W per Dot
- Controlled via DMX with RDM, e:pix or e:net
- Auto-Addressing for simple startup and maintenance
- Real-time status and temperature data via RDM
- Customizable Dot count and up to 13ft pixel pitch
- Dot string up to:
 - S: 48PXLs RGBW
 - M: 36PXLs RGBW
 - L: 24PXLs RGBW



Allegro Dot XS

XS - 1W Output RGBW:
17 lm @ Clear Lens

RGBW, RGB & DW
Clear Lens - 115°
Dome Lens - 175°

- 0.6W per Dot
- Controlled via e:net
- Auto-Addressing for simple startup and maintenance
- Four mounting solutions; surface, DIN-Rail, SS Wire and Mesh Grid
- Customizable Dot count and pixel pitch
- Dot string up to 80PXLs RGBW
- Pixel Distributor Pro 8-port combines power and data connections for 640PXLs per unit
- 450W integrated power supply. Outputs isolated for Class 2 compliance



Media Dot Plus

S - 1W Output RGBW
39 lm @ Clear Lens

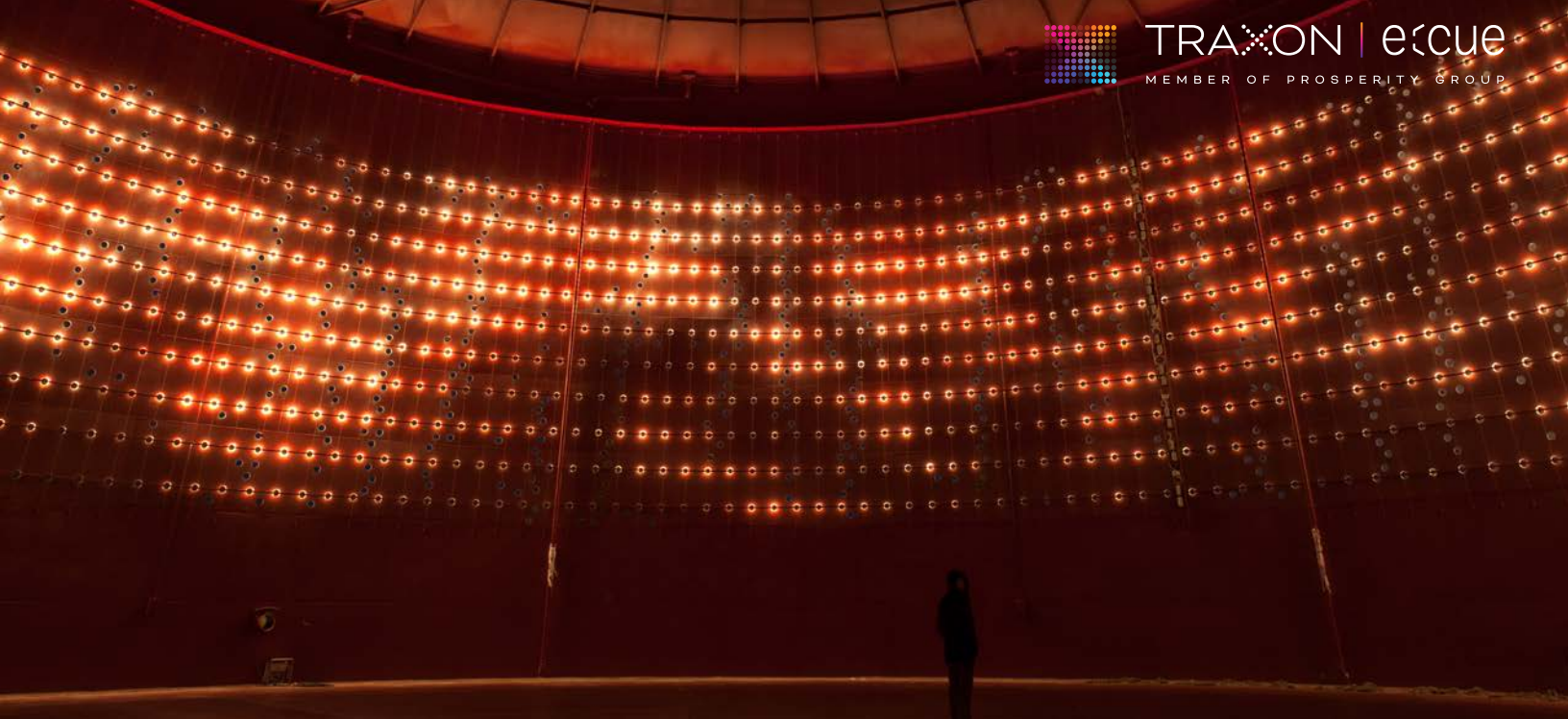
M - 2W Output RGBW:
90 lm @ Clear Lens

L - 3W Output RGBW:
172 lm @ Clear Lens

RGBW, RGB & DW
Clear Lens - 110°
Dome Lens - 150°

- 1W / 2W / 3W per Dot
- Controlled via DMX
 - RDM coming soon
- Auto-Addressing for simple startup and maintenance
- 48V DC for long Dot chains & remoting drivers
- Customizable Dot count and pixel pitch
- Dot string up to:
 - S: 128PXLs RGBW
 - M: 64PXLs RGBW
 - L: 64PXLs RGBW





Silo 468
Helsinki, Finland



Product

Optic

Key Features

Media Dot Go

RGBW, RGB & DW
Clear Lens - 110°
Dome Lens - 150°

- 1W / 2W / 3W per Dot
- Controlled via DMX
- Customizable Dot count and pixel pitch
- Auto-Addressing or manual addressing via TX Smart Addresser
- Dot string up to:
 - S: 128PXLs RGBW
 - M: 64PXLs RGBW
 - L: 64PXLs RGBW

S - 1W Output RGBW:
22 lm @ Clear Lens

M - 2W Output RGBW:
71 lm @ Clear Lens

L - 3W Output RGBW:
130 lm @ Clear Lens

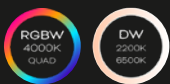


ProPoint Pixel

RGBW, DW & White
Flat Lens - 100°
Dome Lens - 150°

- 20W single-pixel beacon light
- Controlled via DMX with RDM
- Auto-Addressing or RDM addressing
- Separate power and data cable whips for simple wiring
- Five lens options
- Available in 3 standard finishes: RAL7015 / RAL9005 / RAL9003 / custom RAL

20W Output RGBW:
632 lm @ Flat Clear Lens
460 lm @ Dif. Dome Lens
402 lm @ Dif. Drum Lens
460 lm @ Dif. Prism Lens



Flat Clear

Flat Dif.

Dif. Prism

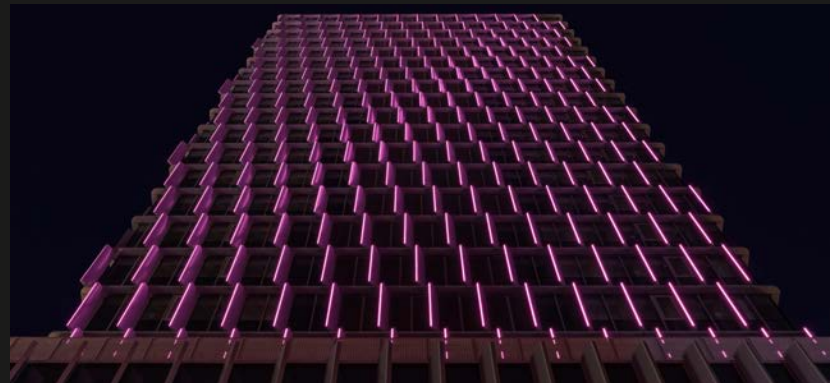
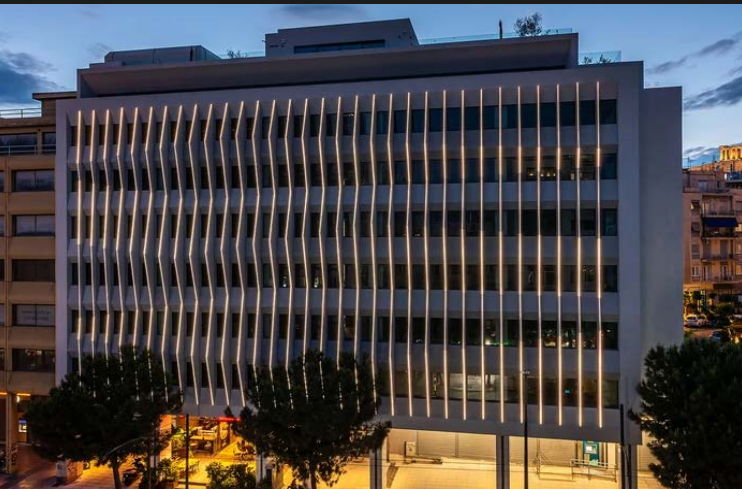
Dif. Drum

Media Dot Applications





Media Tube Applications

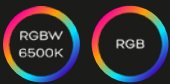


Media Tube

Product

Optic

Key Features



Media Tube Pro

4.2W/foot Output RGB
147 lm/ft @ Clear Lens
107 lm/ft @ Diffused Lens

4.2W/foot Output RGBW
190 lm/ft @ Clear Lens
142 lm/ft @ Diffused Lens

RGB+W, RGB
Clear Lens - 110°
Dif. Lens - 120°

- 0.66" / 16.7mm pixel pitch - adjustable at the factory
- Clear and Round Diffused lens standard, with other lens options by request
- Auto-Addressing for simple startup and maintenance
- Utilizes our e:voPix Technology which provides quicker communication speed, high max channel count, bi-directional feedback, up to 16 Bit color depth, control up to 60 FPS, as well as provides active thermal protection and fixture feedback



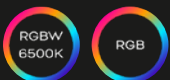
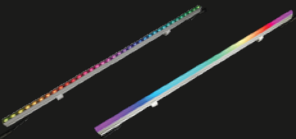
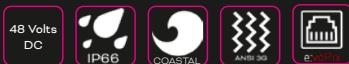
Media Tube Pro HD

5.1 W/foot Output RGB
153 lm/ft @ Clear

RGB
Clear - 110°

RGBW coming soon

- Matrix-style pixels within a linear platform - 3 rows of individually controlled LEDs is standard, with customization to meet project needs
- 0.63" x 0.55" / 16mm x 14mm pixel pitch - adjustable at the factory
- Auto-Addressing for simple startup and maintenance
- Utilizes our e:voPix Technology



Media Tube Plus

4.5W/foot Output RGB
129 lm/ft @ Clear Lens
101 lm/ft @ Diffused Lens

4.5W/foot Output RGBW
220 lm/ft @ Clear Lens
179 lm/ft @ Diffused Lens

RGB+W, RGB
Clear Lens - 110°
Dif. Lens - 120°

- 1.3" / 33mm pixel pitch - adjustable at the factory
- Clear and Round Diffused lens standard; others by request
- Slim 1.3" width with bracket for seamless integration into the installation
- RGB+W+RGB LED arrangement ensures consistent, vibrant visual displays from any viewing location
- Auto-Addressing for simple startup and maintenance





Product

Optic

Key Features



Media Tube Go

4.2W/foot Output RGB
188 lm/ft @ Clear Lens
136 lm/ft @ Diffused Lens

4.2W/foot Output RGBW
243 lm/ft @ Clear Lens
188 lm/ft @ Diffused Lens

RGBW, RGB & DW
Clear Lens - 110°
Dif. Lens - 120°

- 4" / 100mm pixel pitch - adjustable at the factory
- Slim 1.3" width with bracket for seamless integration into the installation
- Clear and Round Diffused lens
- Auto-Addressing or manual addressing via our TX Smart Addresser

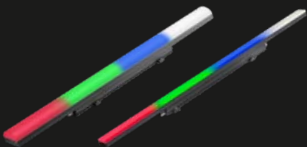
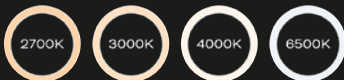


Media Tube Go Mono

4.2W/foot Output 4000K
365 lm/ft @ Diffused Lens

White
Dif. Lens - 120°

- 1 pixel White CCT
- Slim 1.3" width with bracket for seamless integration into the installation
- Controlled via on / off or PWM for 0-10v and DALI control



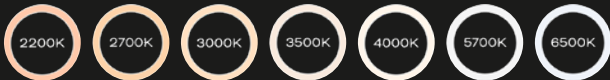
ProPoint Kontour
Narrow / Wide

Narrow 4W Output RGBW:
123 lm @ Dif. Flat Lens
123 lm @ Dif. Round Lens

Wide 5W Output RGBW:
165 lm @ Dif. Flat Lens
173 lm @ Dif. Round Lens

RGBW, RGB & White
Dif. Flat Lens - 120°
Dif. Round Lens - 100°

- Two models available - Narrow 2" width @ 4W/foot and Wide 3" width @ 5W/foot
- 12" / 300mm pixel pitch
- Controlled via DMX
- Auto-Addressing for simple startup and maintenance
- Available in 3 standard finishes: RAL7015 / RAL9005 / RAL9003 / custom RAL



Media Flexible



Product

Ribbon Plus Multi-Bend SO / HO

SO 3.2W/foot Output 3500K
168 lm/ft @ Diffused Lens

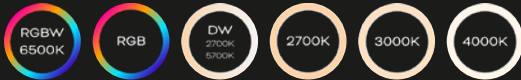
HO 4.4W/foot Output 3500K
412 lm/ft @ Diffused Lens

Optic

White
Dif. Lens - 120°

Key Features

- 16ft (SO & HO) or 32ft (SO) lengths
- Bendable on both the X and Y Axis
- 90+CRI provides high-quality white light
- UV-Stable silicone ensures no discoloration after years in the elements
- 1 pixel, field-cuttable at any length - no limitations for specific cut lengths
- On / Off, 0-10v, ELV or TRIAC control



Pixel Ribbon Plus Multi-Bend

4.3W/foot Output RGBW
150 lm/ft @ Diffused Lens

RGBW, RGB, DW, White
Dif. Lens - 120°

- 20ft length
- Bendable on both the X and Y Axis
- 4" / 100mm pixel pitch - adjustable at the factory
- Field-cut in 4" increments
- Addressing via TX Smart Addresser
- 2.9W/foot for DW & White CCT models
- Bottom, Left, Right, or End cable feed / exit
- Simple mounting using our mounting brackets, aluminum U-Channel, or flexible channels



Pixel Ribbon Go Indoor

4.3W/foot Output RGBW
189 lm/ft @ 120°

RGBW, RGB & DW
Open Beam - 120°

- 20ft length
- 4" / 100mm pixel pitch - adjustable at the factory
- Field-cut in 4" increments
- Addressing via TX Smart Addresser
- 2.9W/foot for DW & White CCT models
- Surface mount with provided 3M tape, or utilize one of our five aluminum channels with diffusion



Toronto Blue Jays Pylon
Toronto, Ontario Canada

Lighting Designer: SNA Display
& Anthony James Partners

Product

Optic

Key Features

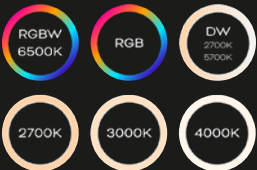


Pixel Ribbon Go Outdoor
Flat

4.3W/foot Output Flat RGBW
180 lm/ft @ 120°

RGBW, DW, White
Flat Open Beam - 120°

- 20ft length
- 4" / 100mm pixel pitch - adjustable at the factory
- Field-cut in 4" increments
- Addressing via TX Smart Addresser
- 2.9W/foot for DW & White CCT models
- Surface mount with provided 3M tape and mounting clips or utilize one of our four aluminum channels with diffusion



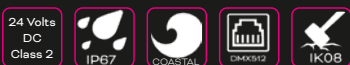
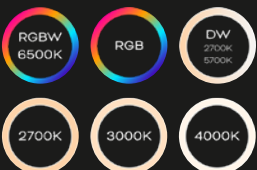
Pixel Ribbon Go Outdoor
Top Bend / Side Bend

4.3W/foot Output TB RGBW
106 lm/ft @ 120°

4.3W/foot Output SB RGBW
80 lm/ft @ 120°

RGBW, DW, White
TB / SB Dif. Open Beam - 120°

- 20ft length
- 4" / 100mm pixel pitch - adjustable at the factory
- Field-cut in 4" increments
- Addressing via TX Smart Addresser
- 2.9W/foot for DW & White CCT models
- Bottom, Left, Right, or End cable feed / exit
- Simple mounting using our mounting brackets, aluminum U-Channel, or flexible channels





Chevy Chase Pavilion
Washington, DC

Media Boards

Product

Media Board Plus
16PXL

5.6W Output RGB
179 lm @ 140°

Optic

RGBW, RGB & DW
Open Beam - 140°

Key Features

- Matrix-style pixels within a rigid Media Board for medium-resolution displays
- 2.5" / 62.5mm Pixel Pitch
- Family consists of a 9"x9" Board, as well as add-on Boards and Strips to fill gaps
- Customizable to achieve different shapes to meet project conditions





©2013 Ira Wexler

Product

Media Board Plus
64PXL

5.6W Output RGB
493 lm @ 140°

Optic


RGBW, RGB & DW
Open Beam - 140°

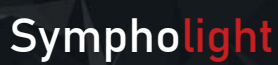

Key Features

- Matrix-style pixels within a rigid Media Board for medium-resolution displays
- 1.23" / 31.2mm Pixel Pitch
- Family consists of a 9.5"x9.5" Board, as well as add-on Boards and Strips to fill gaps
- Customizable to achieve different shapes to meet project conditions




e:cue Control Solutions


LOCAL LIGHT MANAGEMENT 





SYMPL Core Sp




LCE Server



NETWORK INFRASTRUCTURE 






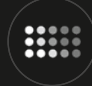


SYMPL Switch



From the colorful illumination of a façade to a dynamic media pixel installation that spans an entire city, **e:cue** lighting control systems offer maximum scalability, reliability and flexibility to meet all requirements.

Discover how **e:cue** control solutions can elevate the performance, flexibility, and impact of your next lighting project—reach out to our team for details.

PROTOCOL INTERFACES
SYMPL Range

<p>dmx</p>   <p>CONTROL DYNAMIC LUMINAIRES</p>	<p>pro, bridge</p>   <p>REALIZE LARGE SMART DMX AND e:pix PROJECTS</p>	<p>e:pix</p>   <p>CONTROL TRAXON MEDIA FIXTURES</p>	<p>pixel</p>   <p>CONTROL MULTI PIXEL (SPI) PRODUCTS</p>
--	--	---	--

EASY LOCAL USER CONTROL



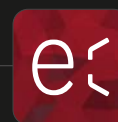
Symphotouch



REMOTE MANAGEMENT



Symphocity



STANDALONE CONTROL

LIGHTDRIVE+ Wifi



ALL-IN-ONE CONTROL PLATFORM

SYMPL Fusion



relay



SWITCH LOADS

dali



MANAGE FUNCTIONAL LIGHTING APPLICATIONS

input



INTERFACE WITH SENSORS AND SWITCHES

serial



COMMUNICATE WITH 3RD PARTY SYSTEMS

How can we help you?

Follow us on Social Media



Traxon e:cue

2915 Whitehall Park Drive
Suite 400
Charlotte, NC, 28273
americas@traxon-ecue.com

Technical Support

support@traxon-ecue.com

Specifications are subject to change without notice.

